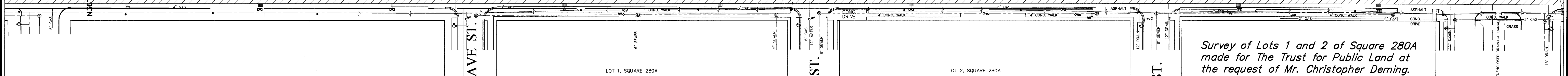
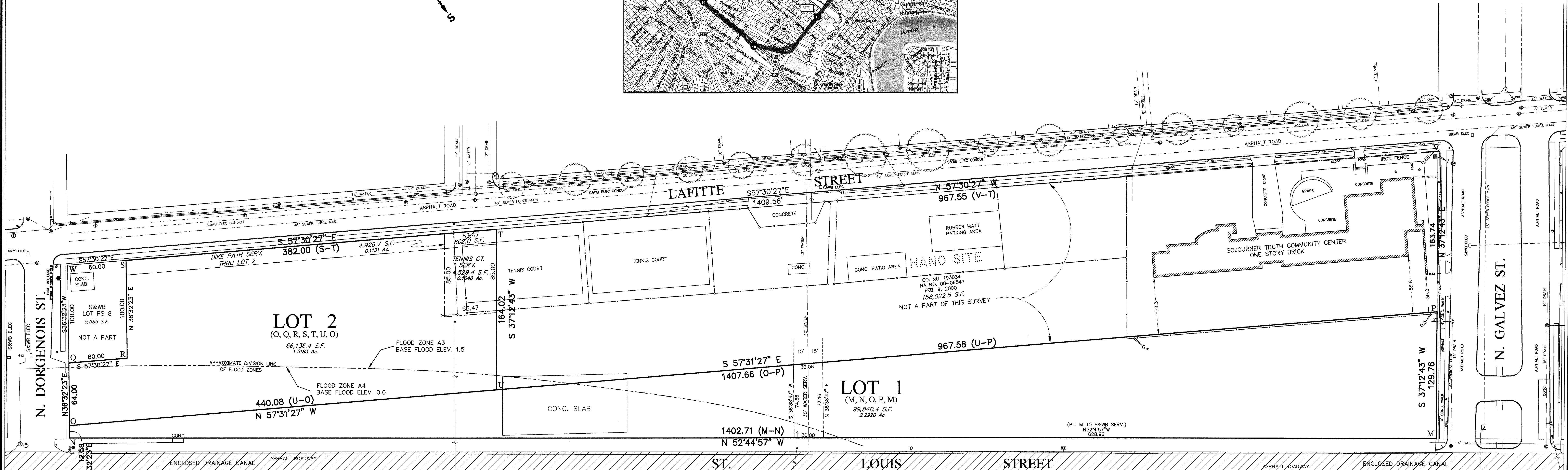
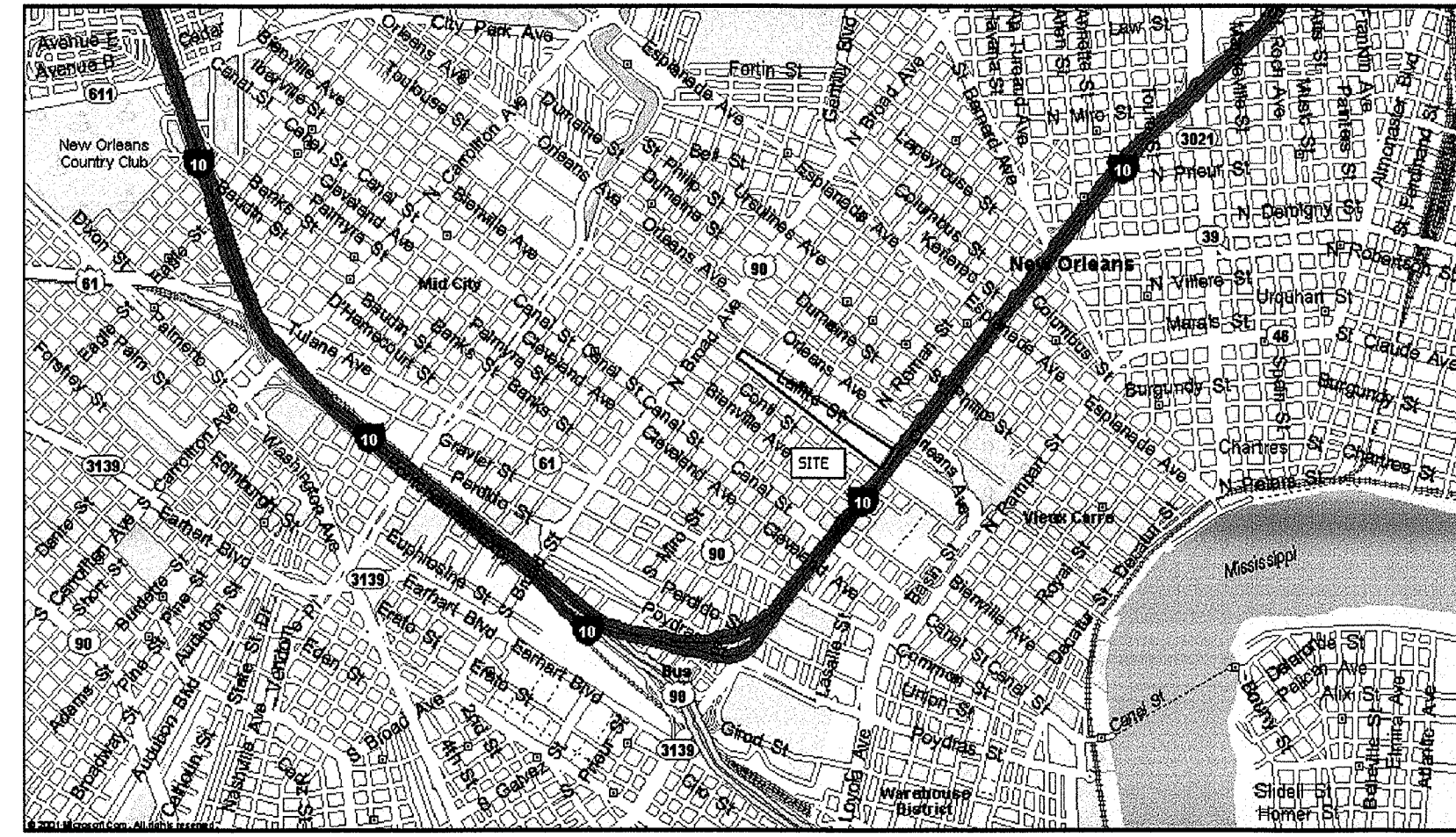
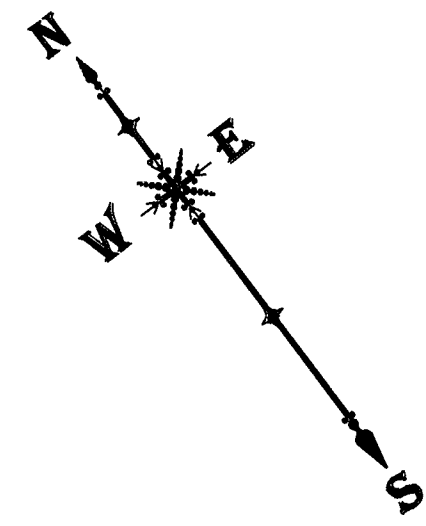


# SQUARE 280A SECOND DISTRICT NEW ORLEANS



**LOT 1, SQUARE 280A**  
A CERTAIN PORTION OF GROUND, together with all of the buildings and improvements thereon, all of the rights, ways, privileges, servitudes, appurtenances and advantages thereunto belonging or in anywise appertaining situated in the Second District, City of New Orleans, designated Lot 1, Square 280A, bounded by North Galvez Street, St. Louis Street, North Dorgenois Street, and Lafitte Street as shown on a Plan of Resubdivision by the office of Gandolfo Kuhn, L.L.C. dated March 16, 2006, last revised August 30, 2006, drawing number T-217-2 and is more particularly described as follows:  
Begin at Point M being the intersection of the west line of North Galvez Street with the north line of St. Louis Street; thence along said line N 52° 44' 57" W, a distance of 1402.71 feet to Point N at the east line of North Dorgenois Street; thence along said line N 36° 32' 23" E, a distance of 12.59 feet to Point O at the division line between Lot 1 and Lot 2; thence along said line S 57° 31' 27" E, a distance of 1407.66 feet to Point P at the west line of North Galvez Street; thence along said line S 37° 12' 43" W, a distance of 129.76 feet to Point M at the north line of St. Louis Street and the Point of Beginning. Containing 2.2920 acres.

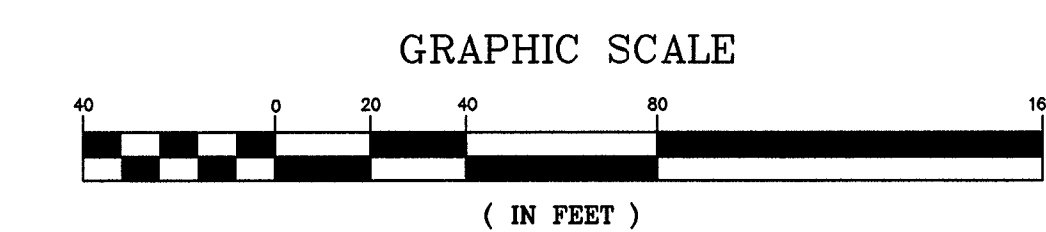
**LOT 2, SQUARE 280A**  
A CERTAIN PORTION OF GROUND, together with all of the buildings and improvements thereon, all of the rights, ways, privileges, servitudes, appurtenances and advantages thereunto belonging or in anywise appertaining situated in the Second District, City of New Orleans, designated Lot 2, Square 280A, bounded by North Galvez Street, St. Louis Street, North Dorgenois Street, and Lafitte Street as shown on a Plan of Resubdivision by the office of Gandolfo Kuhn, L.L.C. dated March 16, 2006, last revised August 30, 2006, drawing number T-217-2 and is more particularly described as follows:  
Commence at the Point W being the intersection of the east line of North Dorgenois Street and the south line of Lafitte Street; thence along said line S 57° 30' 27" E, a distance of 60 feet to Point S at the division line between S&WB Lot PS 8 and Lot 2 and the Point of Beginning; thence continue along the south line of Lafitte Street S 57° 30' 27" E, a distance of 382 feet to Point T and the easterly line of Lot 2; thence along said line S 37° 12' 43" W, a distance of 164.02 feet to Point U and the division line between Lot 2 and Lot 1; thence along said line N 57° 31' 27" W, a distance of 440.08 feet to Point Q and the east line of North Dorgenois Street; thence along said line N 36° 32' 23" E, a distance of 64 feet to Point O at the division line between Lot 2 and S&WB Lot PS 8; thence along said line for the next two courses S 57° 30' 27" E, a distance of 60 feet to Point R; thence N 36° 32' 23" E, a distance of 100 feet to Point S at the south line of Lafitte Street and the Point of Beginning. Containing 1.5183 acres.

**LEGEND**

⊙	—	DRAIN MANHOLE		
⊙	—	WATER MANHOLE		
⊙	—	SEWER MANHOLE		
⊙	—	GAS MANHOLE		
⊙	—	UNDERGROUND ELECTRIC & MANHOLE		
⊙	—	OVERHEAD ELECTRIC & POLE		
⊙	—	OVERHEAD TELEPHONE & POLE		
⊙	—	UNDERGROUND TELEPHONE & MANHOLE		
⊙	—	CATV BOX		
⊙	—	WESTERN UNION MH		
⊙	—	CATCH BASIN		
⊙	—	OPEN GRATE DRAINS		
⊙	—	HYDRANT		
⊙	—	PARKING METER		
⊙	—	TRAFFIC LIGHT		
⊙	—	DRAIN CLEANOUT		
⊙	—	SEWER CLEANOUT		
⊙	—	WATER VALVE		
⊙	—	LIGHT STANDARD		
⊙	—	WATER METER		
⊙	—	GAS VALVE		
⊙	—	⊙	—	POWER POLE AND GUY ANCHOR

THE LOCATIONS OF UNDERGROUND AND OTHER NONVISIBLE UTILITIES SHOWN HEREON HAVE BEEN DETERMINED FROM DATA EITHER FURNISHED BY THE AGENCIES CONTROLLING SUCH DATA AND/OR EXTRACTED FROM RECORDS MADE AVAILABLE TO US BY THE AGENCIES CONTROLLING SUCH RECORDS. WHERE FOUND, THE SURFACE FEATURES OF LOCATIONS ARE SHOWN. THE ACTUAL NONVISIBLE LOCATIONS MAY VARY FROM THOSE SHOWN HEREON. EACH AGENCY SHOULD BE CONTACTED RELATIVE TO THE PRECISE LOCATION OF ITS UNDERGROUND INSTALLATION PRIOR TO ANY RELIANCE UPON THE ACCURACY OF SUCH LOCATIONS SHOWN HEREON, INCLUDING PRIOR TO EXCAVATION AND DIGGING.

**Call before you dig.**  
1-800-872-5800



**Survey of Lots 1 and 2 of Square 280A made for The Trust for Public Land at the request of Mr. Christopher Deming, New Orleans, La. October 30, 2009**

I certify to The Trust for Public Land, The City of New Orleans, Copdeville Title Corporation, First American Title Insurance Company, and W. Eric Lundin, III, Attorney at Law that this plot and the survey on which it is based were made in accordance with the "Minimum Standard Detail Requirements for an ALTA/ACSM Land Title Survey," jointly established and adopted by ALTA and NSPS in 2005. Pursuant to the Accuracy Standards as adopted by ALTA and NSPS and in effect on the date of this certification, undersigned further certifies that in my professional opinion as a land surveyor registered in the State of Louisiana, the Relative Positional Accuracy of this survey does not exceed that which is specified therein.

This survey is in accord with a Class B Survey as defined in the Minimum Standards for Property Boundary Surveys in the State of Louisiana.  
New Orleans, La. October 30, 2009

*Professional Land Surveyor*  
La. License No. 4628

**PAUL J. KOCKE SR.**  
REGISTERED PROFESSIONAL LAND SURVEYOR

**GANDOLFO KUHN, L.L.C.**  
CIVIL ENGINEERS AND LAND SURVEYORS  
5415 POWELL ST. SUITE A  
BARRATON, LA. 70123  
e-mail: surveys@gandolfokuhn.com  
PHONE 504-818-2810 FAX 504-818-2811